

# Company Presentation



ASX: SRR  
[www.shawriver.com.au](http://www.shawriver.com.au)

July 2007

### ***Forward looking statements***

*Forward-Looking Statements: This document may include forward-looking statements. Forward-looking statements include, but are not limited to, statements concerning Shaw River Resource's exploration program and other statements that are not historical facts. When used in this document, the words such as "could," "plan," "estimate," "expect," "intend," "may," "potential," "should," and similar expressions are forward-looking statements. Although Shaw River Resources Limited believes that its expectations reflected in these forward-looking statements are reasonable, such statements involve risks and uncertainties and no assurance can be given that actual results will be consistent with these forward-looking statements.*

### ***Reference to reserves***

*While Shaw River Resources remains optimistic of the reserve potential of its tenements any reference to "reserves" or use of the term "ore" in this document is/are conceptual in nature. Further work is required to determine mineral reserves.*

### ***JORC Compliance***

*The information in this report to which this statement is attached that relates to Exploration Results, Mineral Resources or Ore Reserves is based on information compiled by Mr Vincent Algar who is a Member of the Australasian Institute of Mining and Metallurgy. Vincent Algar is a full-time employees of the Company. Vincent Algar has sufficient experience which is relevant to the style of mineralisation and type of deposit under consideration and to the activity which he is undertaking to qualify as a Competent Person as defined in the 2004 Edition of the 'Australasian Code for Reporting of Exploration Results, Mineral Resources and Ore Reserves'. Vincent Algar consents to the inclusion in the report of the matters based on his information in the form and context in which it appears.*

# Contents



1. Company Background and Mission
2. Directors and Team
3. 2007 Highlights
4. Projects
5. Capital Summary



# Company Background



Shaw River Resources is a Western Australian gold and base metal and uranium exploration company. The company has a large tenement footprint in the Pilbara region over prospective geological sequences. Multi-element exploration (gold, copper, nickel, zinc, silver, lead and uranium) can be co-located on the same tenements.

The board and management are focused on action and positive results using drilling as its primary discovery tool.

The company aims to grow and advance the business through discovery, key relationships and new partnerships.

# Mission



Shaw River Resources provides capital growth for our shareholders through the exploration, discovery and delineation of high value mineral deposits.

Shaw's intention is to develop and mine any economically feasible deposits discovered on its tenements.



# Directors



**Rick Cullen LLB, BSc**  
Independent Chairman  
(Cullen Babbington Hughes)



**Denis O'Meara JP, MAusIMM**  
Non Executive Director  
(Oakover, De Grey, Montezuma)



**David Flanagan Bsc MAusIMM**  
Non Executive Director  
(RSG, Gindalbie, MD Atlas Iron)



**Vincent Algar Bsc Hons MAusIMM**  
Managing Director  
(JCI, RSG, Surpac Minex Group)



**Tony Walsh BCom MBA CA**  
Company Secretary  
(ASX)

# Team



The company has chosen to employ highly experienced team members who have the knowledge, drive and willingness to use proven as well as the latest, innovative exploration techniques.

## **Perth**

- Glenn Martin (Exploration Manager, 14yrs)
- Lizz Schollum (Database, 12yrs)
- Mark Hill (Snr Geologist, 22yrs)
- Justin Benton (Snr Geologist, 12 years)
- Jonathan King (Geochemist, 18 years)
- Matthew McCarthy ( Ni/PGE Geologist, 5 years)
- Amanda Donovan (Accounts and Administration 10 yrs)
- Josh Probert (Accounts 13 yrs)

## **Consultants**

- Bruce Craven – Southern Geoscience (Geophysics)
- Tony Morgan – Mincorp consultants (Geology)
- John Crossing – Consulting geologist



# Q1 2007 Highlights



## **Farrel Well – Gold and Base Metals**

- Drilling program completed at Farrel Well gold targets. Best results include 3 m at 1.68 g/t Au and 1m at 2.87 g/t Au.
- Results confirm exploration techniques and extensive structure related mineralised system.
- Subsequent to quarter end, high grade rock chip sample results up to 32 g/t Ag, 0.3% Zn and 13% Pb highlight strong base metal potential.

## **Mt Minnie Project – Gold Copper and Uranium**

- Identified uranium exploration targets north of Paladin's 12000t U<sub>3</sub>O<sub>8</sub> Manyingee Uranium Deposit.
- Exploration plan developed for uranium and base metal targets.
- Field exploration begins in May 2007 focused on drill target generation.
- A key Land Access Agreement was signed with the Thalanyji people during March facilitating access to the 1,838 km<sup>2</sup> project area.

# Q2 2007 Highlights



## **Farrel Well – Gold and Base Metals**

- Rock chip sample results up to 32 g/t silver, 0.7% zinc and 13% lead at Coongan prospect along a 120m trend
- High grade copper (7 %) and gold (6.5 g/t) rock chips from Myrnas Hill prospect
- Six new base metal drilling targets identified from sampling and mapping.

## **Mt Minnie Project – Base Metals and Uranium**

- Uranium exploration targets heritage cleared for drilling in September Quarter
- Exploration plan developed for uranium and base metal targets.
- Field exploration focused on base metal target generation.

# Exploration Statistics (Jan-June 07)



Drilling	Q1-07	Q2-07	<i>Q3-07 (planned)</i>
RC Drilling Metres	727m	0m	<i>1500m</i>
RAB/Aircore Drilling Metres	727	0m	<i>6000m</i>
Surface Sampling			
Rock Chip Samples	307	494	<i>150</i>
Soil Samples	219	597	<i>1200</i>
Stream Samples	39	402	<i>800</i>

# Activity Plan 2007



Project	Q1: January - March 2007	Q2: April – June 2007	Q3: July - Sept 2007	Q4: Oct – Dec 2007
<b>Farrel Well</b>	<input checked="" type="checkbox"/> Gold NE Zone, Graeme. Drill near previous intersections 	<input checked="" type="checkbox"/> Soil Sampling and mapping drill target locations 	<input type="checkbox"/> VTEM Survey <input type="checkbox"/> Drilling Base Metal and gold targets 	<input type="checkbox"/> Drilling Advanced targets 
<b>Hedland</b>	<input checked="" type="checkbox"/> Delineate target zone and geological continuity with De-Grey finds 	<input checked="" type="checkbox"/> Heritage and Ground Control <input checked="" type="checkbox"/> Drill Program design and planning 	<input type="checkbox"/> VTEM over Tabba Tabba extension. <input type="checkbox"/> RAB Drill gold and VTEM target 	<input type="checkbox"/> Tabba Tabba extension.drilling advanced targets 
<b>Mt Minnie</b>	<input checked="" type="checkbox"/> Native Title agreement. <input checked="" type="checkbox"/> Uranium Model report, target generation. 	<input checked="" type="checkbox"/> Target generation and field sampling programs <input checked="" type="checkbox"/> Review Geological Model 	<input type="checkbox"/> Uranium Drilling <input type="checkbox"/> New Base Metal and Uranium target generation 	<input type="checkbox"/> New base metal target drilling <input type="checkbox"/> Uranium follow up programs 

# Current Quarter (3) Activities



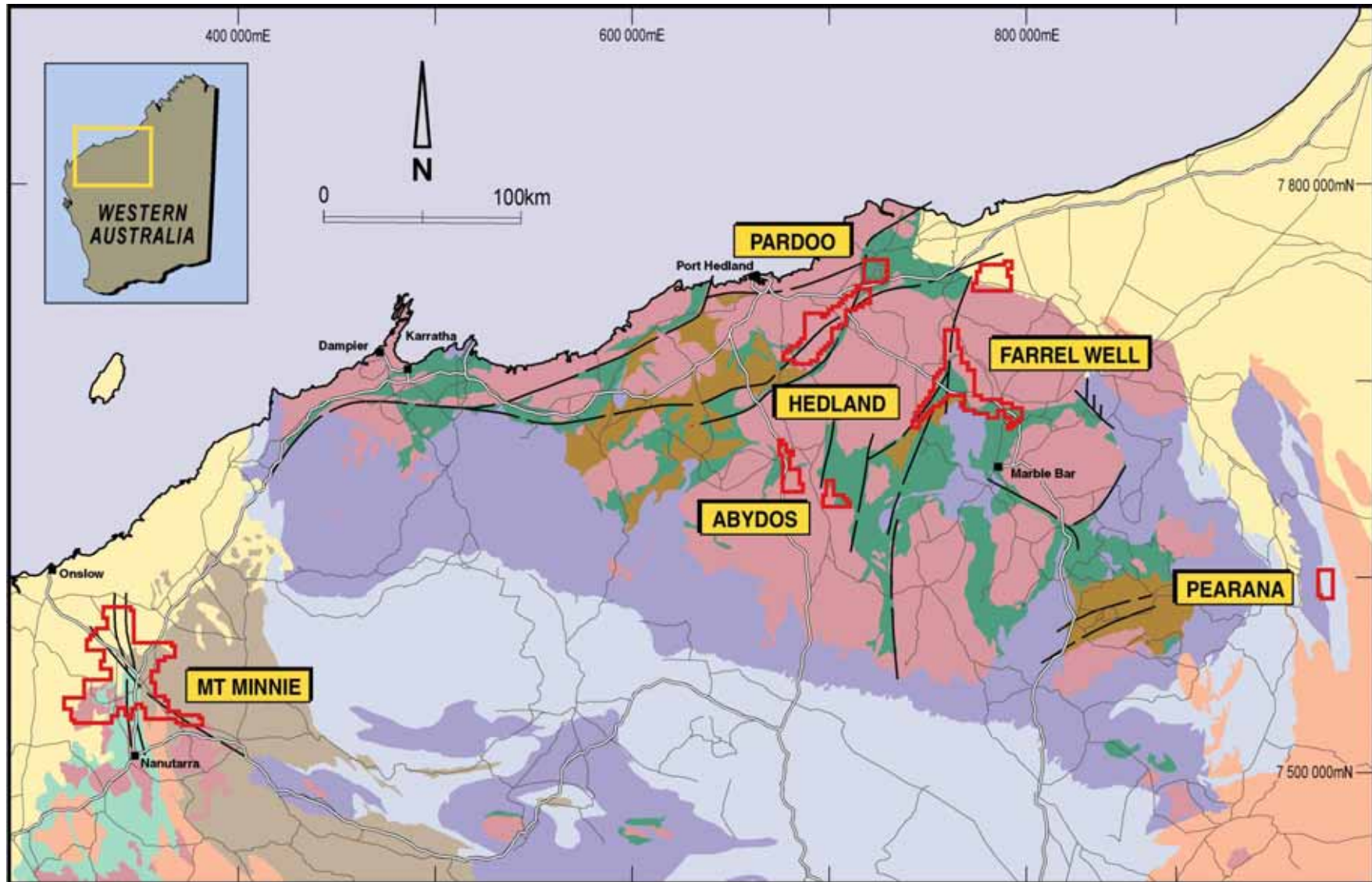
- Drilling at Farrel Well and Hedland.
- 200 km<sup>2</sup> VTEM geophysics survey at Farrel Well and Hedland projects.
- Uranium drilling at Mt Minnie.
- Field exploration at Farrel Well gold and base metal targets to continue, focusing on drill target generation.

# Project Background



- The regions (Pilbara and Ashburton) are emerging as world class mineral provinces.
- They are sleeping mineral giants with excellent geology favouring a range of potential economic deposit types.
- The company's footprint in the Pilbara offers investors leverage to a prospective region (backed up by historical and recent exploration activity) capable of delivering economic gold, base metal and uranium mineralisation.

# Project Locations



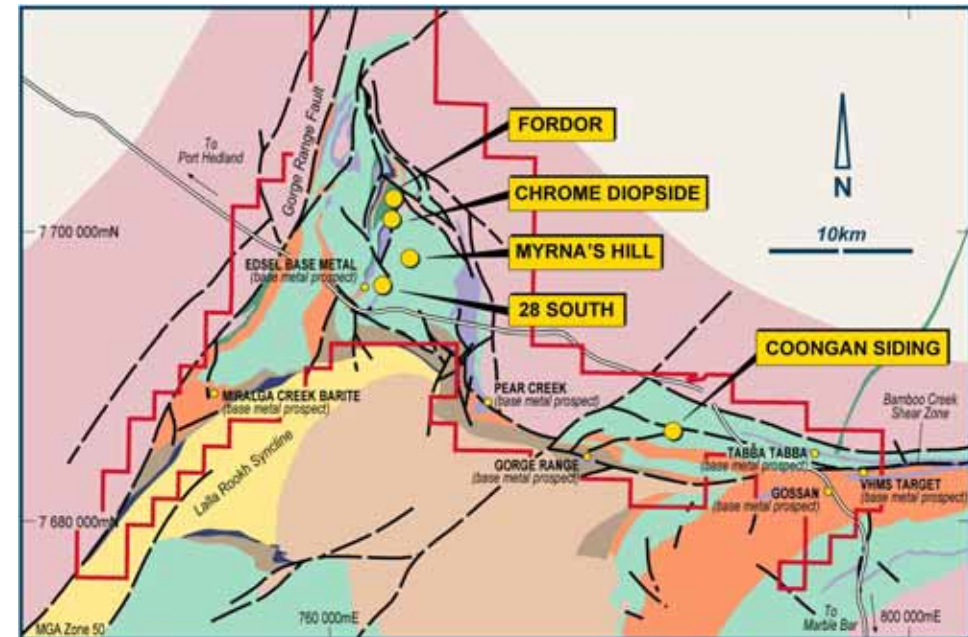
# Farrel Well Project



## Targeting: Base Metals, Nickel, Gold

### Budget

- Year 1: \$1,400,000
- **Activity**
- Drilling Base Metal targets.
- VTEM to generate new targets for immediate drilling.
- Refine and rationalise existing target list by acquiring infill data.



# Hedland Project



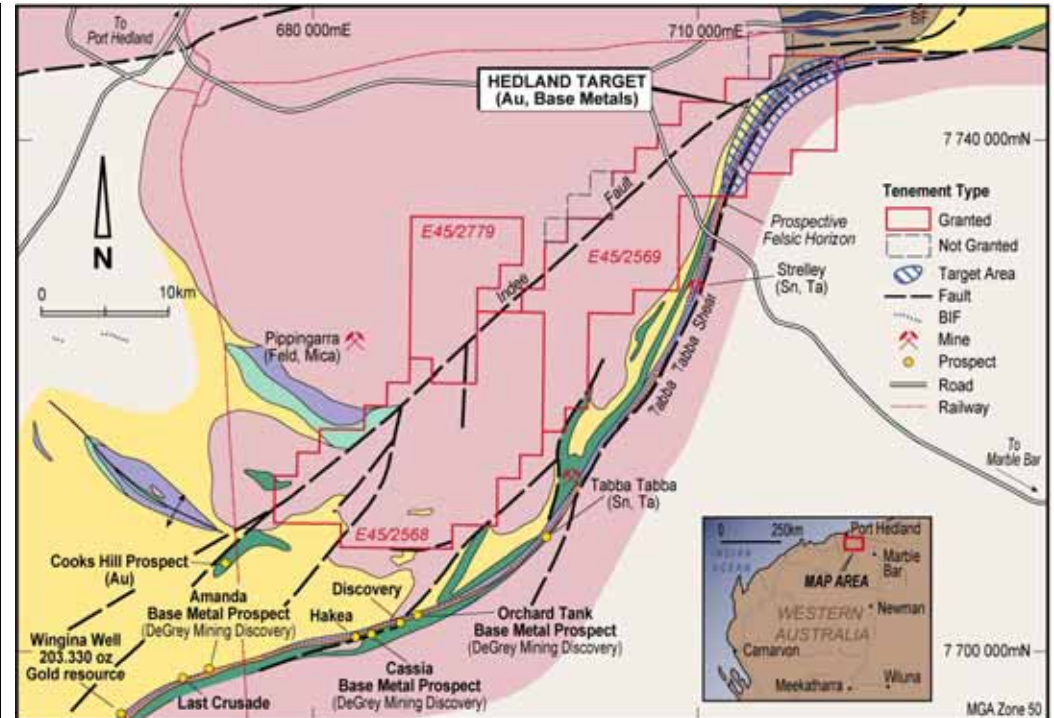
## Targeting : Gold and Base Metals

### Budget

- Year 1 \$360,000

### Activity

- Aircore drilling program over base metal and gold targets
- VTEM over 14km Tabbata Tabbata Sheer Zone.
- Follow up drilling targets



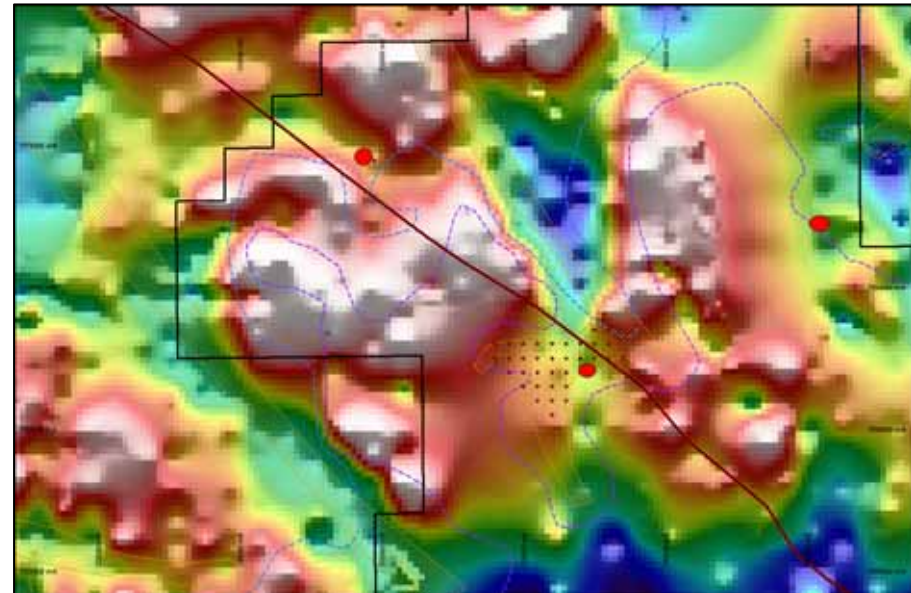
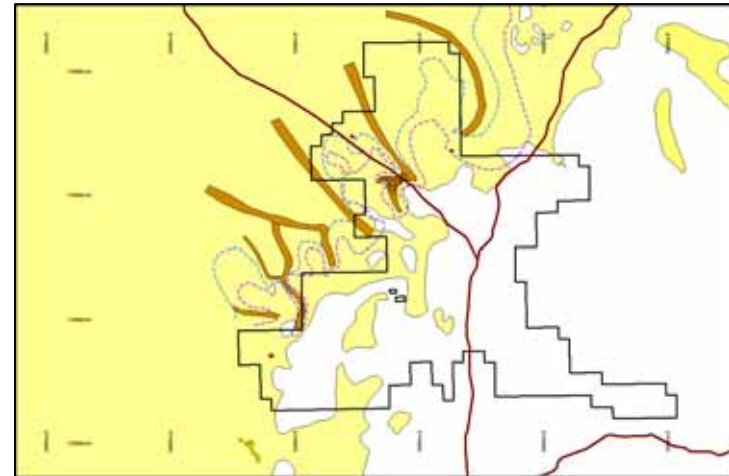
# Mt Minnie Project



## Targeting: Uranium and Base Metals

### Budget

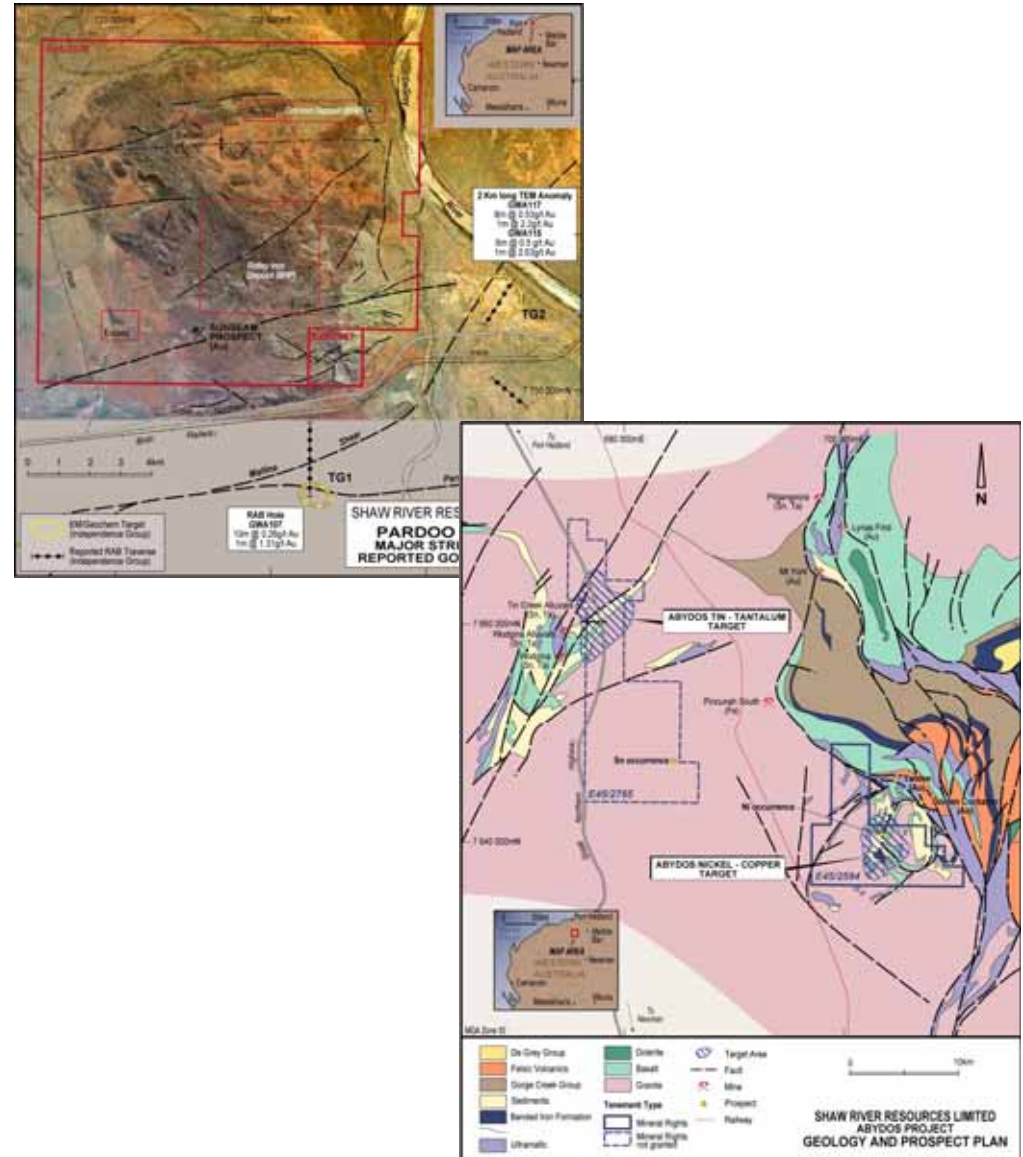
- Year 1: \$720,000
- **Activity**
- Drilling at 1<sup>st</sup> of 4 Uranium Targets
- Targeting WMC gold copper targets.
- Targeting Turtle /Range copper silver prospect extensions in SRR ground.



# Other Projects



- **Targeting :**
  - **Abydos : Nickel , Tantalum**
  - **Pardoo : Gold, Nickel and Base Metals**
- **Budgets**
  - Pardoo (yr1&2) \$108,000
  - Abydos (yr1&2) \$54,000
- **Activity**
  - Investigate Pardoo nickel potential by re-analysis of Atlas data
  - Generate drill targets on Tantalum and Nickel at Abydos



# Capital Summary



Share Price at July 17 2007	\$0.19
Ordinary Shares on Issue	59,496,500
Market Cap	\$11.3 m
Cash available	\$4.0 m

Shareholder Top 20	59.7 %
Atlas Iron Limited	37.8 %
Unlisted Options	7,100,000
Escrow Period	Atlas Iron: 22 Dec 2008 - 100% Seed Capitalists: 1 Nov 2007 - 75%

# Investment Decision



- Shaw River Resources (ASX:SRR) offers significant exposure to discovery in a world class mineral region, the Pilbara.
- The company has built up an impressive target list in its first six months of activity.
- We have built a young dynamic team with track records of success adding to experience on the Board.
- Investment in SRR now offers maximum upside and exposure to the next four months of drilling activity.